

Eat AND great **FAQs**

SCHEDULE

- 6:30PM** Music, Drinks, and Engagement
- 7:15PM** Remarks followed by buffet dinner (assigned tables)
- 8:45PM** Dessert, Trailblazer Awards, & Raffle Winners

ATTIRE: SPORTY CHIC

What is sporty chic?

- Think elevated casual, like summer dresses, stylish sneakers or sandals, or polished, comfortable looks like collared shirts paired with lightweight pants.

Want to try the sport of padel?

- If so, feel free to dress with a bit of flexibility —comfortable footwear and attire that allows you to move. Playing is completely optional.
- Athletic wear like gym shorts or sweats aren't necessary for this event, but fun sneakers are welcome if that's your style.

Whatever makes you feel comfortable for a fun night celebrating Fit4Kids is perfect!

Parking Details below

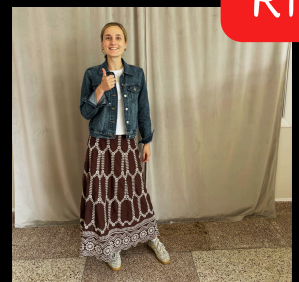
Too
Casual



Too
Formal



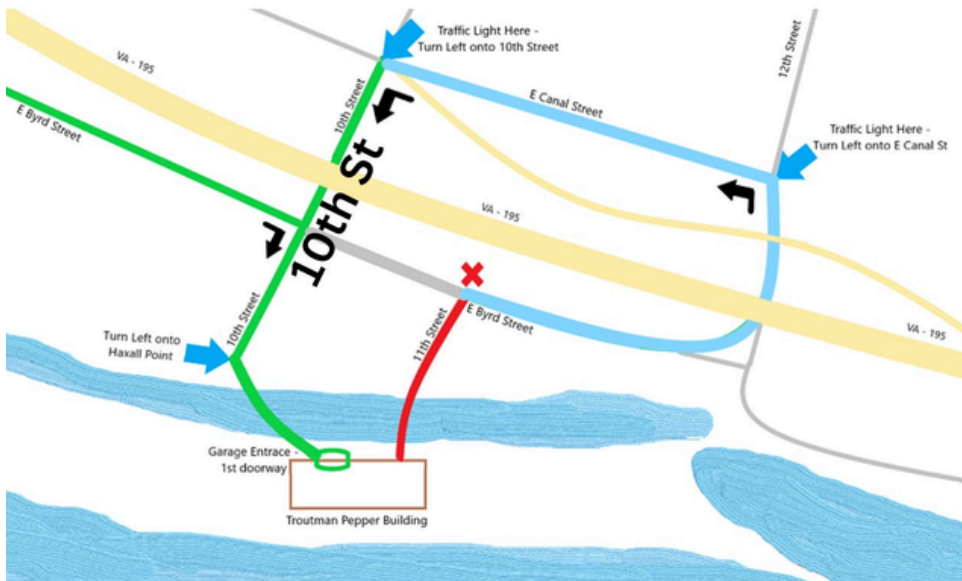
Just
Right



PARKING

- Validated parking is available at the Troutman Pepper Locke Parking Garage located at 1001 Haxall Point, Richmond, VA 23219.
- Please enter through the **parking/delivery entrance** and pull a ticket. **** We'll have a volunteer here ****
- Park in any unmarked parking space on levels P3-P6 and take the elevator to P3 (not the lobby).
- Exit through the P3 gate on your left. **** Another volunteer here ****
- Once outside, take the steps to your right to the canal level and enter main Padel Plant doors.
- Please bring your parking tickets to the Registration desk for validation.
- **EXITING THE EVENT:** Make sure you have your validated parking ticket. Please reverse entry directions. **Exit the building in your car on P1** (validation only works on P1 exit, not P3).

Limited Mobility? There is no elevator or ramp access available from the garage to the venue. If any guests have limited mobility, we recommend getting dropped off directly in front of the Padel Plant.



**Still have questions?
Email Leigh Busby at
leigh@grfit4kids.org**

